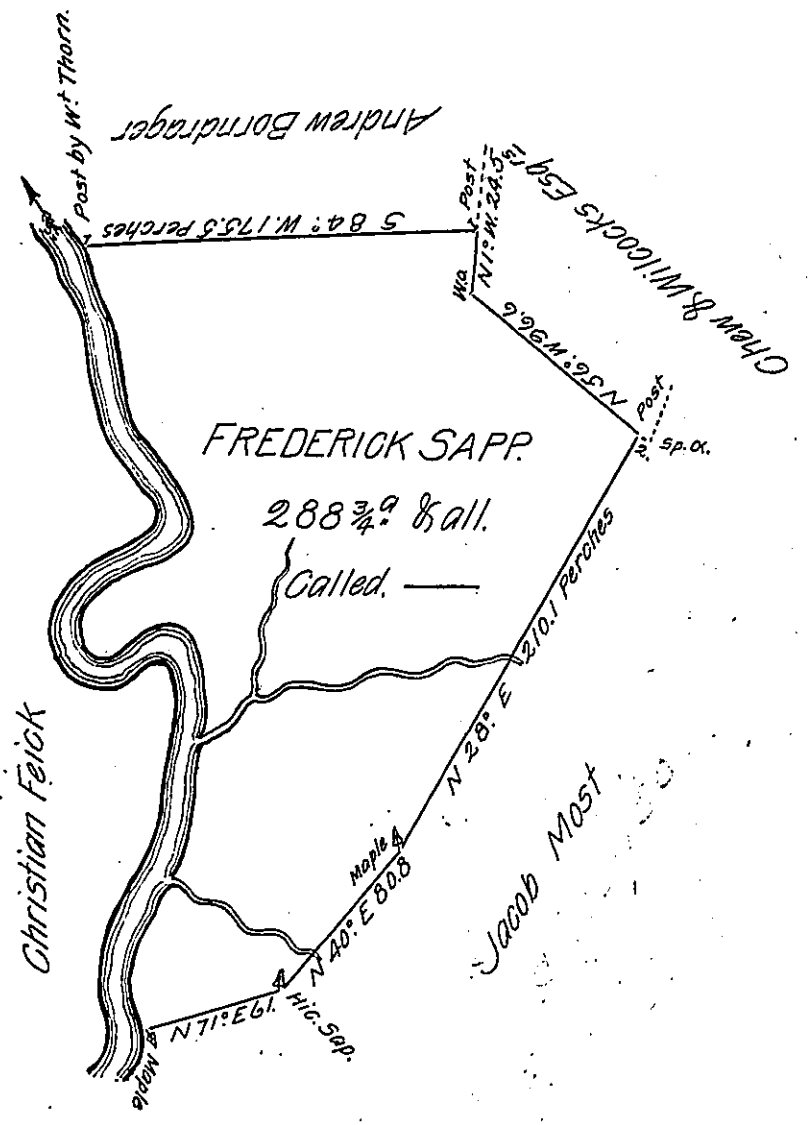


Courses and Distances up the River
beginning at a Post by a White Thorn
on the Bank

- S 20° E..... 73 Perches
- S 34° E..... 55.5
- S 52° W..... 60.
- S 21° E..... 19.
- N 72° E..... 41.5
- S 10° E..... 38.
- S 7° W..... 58.
- S 23° W..... 50.
- S 12° E..... 31. to a
- Maple on the Bank 426.



Situated on the East side of little Yough River in Brothers Valley Township Bedford County and Surveyed the 1st day of July 1785. In Pursuance of a Warrant dated the 19th day of April 1785.

for Alexander M^cClean Esq^r D.S.

To John Lukens Esq^r }
Surveyor General }

Thomas Vickroy

in (now) Elk Lick township Somerset County.

IN TESTIMONY that the above is a copy of the original remaining on file in the Department of Internal Affairs of Pennsylvania, made conformably to an Act of Assembly approved the 16th day of February, 1833, I have hereunto set my Hand and caused the Seal of said Department to be affixed at Harrisburg, this fifth day of December 1906.

Loac R. Brown
Secretary of Internal Affairs